

APARTMENT INTERCOM STATIONS

For any size building with 2 or more apartments, with any number of entrances, we can provide a system to meet your needs. Choose from plastic, aluminum, stainless steel or solid brass apartment stations. Select from over 140 different models of open-voice and handset type apartment intercom stations, for conventional or digital-dial type or IP systems. We can also provide video-intercoms in Black and White or in **COLOR**! Call Alpha Communications® today, and feel safer tomorrow.



IS543 Plastic 'Universal' 5/4/3-wire Apt. Station For Flush or Surface Mount
(US Patent# 7,409,052)



IS204 Plastic Apt. Station 4-wire style For Flush or Surface Mount



LI404B 24VDC Auxiliary Strobe for the Hearing-Impaired



IS481C Oversize Stainless Steel



IS427C Stainless Steel 2-Gang Apt. Station (requires backbox)



IS407C Flush Stainless Steel



IS407S Surface Stainless Steel



AP543 White Plastic Adapter Plate for IS543 or IS204



IA543 Universal Apt. House Intercom Amplifier (open-voice type) - now with built-in mag lock control and 'Talk' gated door release control (22% smaller size)



VFS1000 / VFS1500 Series **COLOR** QwikBUS™ 2-Loop Wire Video-Intercoms



FS1000 FS1500 Series QwikBUS™ 2-Loop Wire Apt. Intercoms (in choice of 6 finishes)



VHC3033 **COLOR** QwikBUS™ 2-Loop Wire Video-Intercoms (Handset Style)



NH200A 5-Wire Handset Power Supply/Amplifier for HT2003/2 or HT3003/2 series Apt. Handsets

HT3000 Series 2, 3, or 5 Wire **HT3033** Series 2 (loop) Wire Apt. Handsets available in White or Anthracite (shown) and can be Flush (shown), Surface or Desk Mounted (with optional adapters)



NEW

HT40W 2-Wire Loop QwikBUS™ Wall Handset (White shown) also available in extra-cost Anthracite (model **HT40A**)

V.I.P.™
Series
Stainless
Steel
Apartment
Intercom
Stations



IS482C Elongated Stainless Steel

APARTMENT HOUSE LOBBY PANELS

Alpha Communications® lobby panels are available in stock and custom sizes, in aluminum, stainless steel and polished brass, for flush, surface, desk or pedestal mounting. We can provide a custom lobby panel for any size building, with virtually any type of speaker equipment and a host of optional features, such as built-in postal release switches, built-in Black and White or **COLOR** C.C.T.V. cameras, privacy handsets, card access readers, proximity and biometric controllers, and much more. We can even provide our patented AlphaEntry™ touchscreen lobby units, to work with many different systems and stations.

Contact Alpha Communications® for your toughest or most unique lobby entry panel requirements.



ES612

Plastic Button Economy Style Entry Panels for 2-13 Buttons (no frame needed)



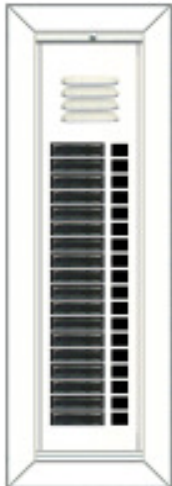
AM642

Metal Button Vandal-Resistant Entry Panels for 2-16 Buttons (no frame needed)



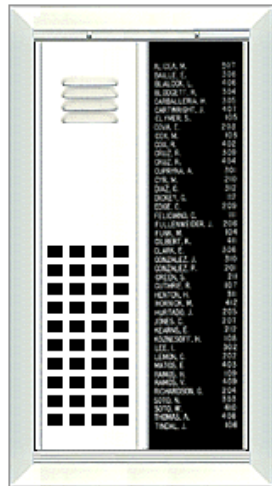
CM491 Series

Vandal-Resistant Directory Style Panels for 4-20 buttons (needs OF291/S frame)



AM492

Metal Button Vandal-Resistant Modular Style (needs OF190 series frame)



CM492 Series

Vandal-Resistant Aluminum Entry Panels Modular Directory Style for any number of buttons (needs OF190 series frame)



ES Series
Compact Surface Mount Door Station 1-4 Buttons (with rain hood) 4-button model

ES04S (shown)



STR™ Modular Panel Series (Illuminated) Choose from a variety of plug-in modules and components, as well as colors and mountings



STR™ Digital-Dial Modular Panel Series can be used with the STR™ type multi-unit intercom and/or video-intercom systems. Titanium finish (shown)



VI402 Series St. Steel V.I.P.™ Vandal-Resistant and VI404 Series Polished Brass V.I.P.™ Custom Entry Panels



TT Series Illuminated (1-piece) Plastic Button European Style Panels (shown in standard Brown Anodized finish)



KISW-I-18SS (indoor)

KPVM-O-17 (outdoor - shown)

Touchscreen Visitor Entry Kiosk Station for use with our AlphaEntry™ v5 PC-Based (Patented*) Entry Intercom or Telephone Entry System (can be used as a stand-alone alphabetical directory only, or as a telephone-entry system or as a front-end to almost any conventional intercom or video-intercom system) Can also be used with the STR™ QwikBUS™ stations and VOIP stations (*U.S. Patent# 7,783,018)



EL2000L SERIES
 Surface Mount Telephone Entry Master Station. Hands-Free with 5" backlit LCD screen. Can accept up to 2,000 codes. Model **EL2000LG** (shown in Grey color). Also available model **EL2000LB** (Black color) and **EL2000LN** (Nickel color).



DPH100W
 'Dummy Phone' with flashing RED Light Bar. Typically used with 'No-Phone-Bill' type and AlphaEntry™ concierge systems

TELEPHONE ENTRY & IP PRODUCTS

You can choose from some of the most advanced communications systems available today including IP intercoms and video-intercoms. We offer conventional telephone entry intercoms or 'No-Phone-Bill' type, for lobby entrance, and/or concierge. We even offer our patented touch-screen solution. No matter what size the project, Alpha Communications® has the systems you need.



AlphaEntry™ v5 PC-Based
 (Patented*) Touch-Screen Directory and Digital-Dial Entry Intercom or Telephone Entry System (can be used as a stand-alone alphabetical directory only, or as a telephone-entry system or as a front-end to almost any conventional intercom or video-intercom system) Can also be used with the STR™ QwikBUS™ stations and VOIP / IP stations (*U.S. Patent# 7,783,018)

EL25 SERIES Surface Mount Residential Type Telephone Entry Master Station. Hands-Free. Models available: EL25G (Grey color), EL25B (Black color) and EL25N (Nickel color). Can be mounted vertically or horizontally.

TE903 (shown) Hands-Free Surface Mount Stainless Steel faceplate Telephone Entry Master Station with 100 name directory. **TE904** also available with 200 name directory. Both models allow dialing for up to 750 phone numbers. Can also be used with optional "No Phone Bill" equipment.



A500 IP Apartment Intercom Station can be intermixed with IP video monitor stations (PoE powered)



TE7210/LCD Hands-Free Surface Mount St. Steel faceplate Telephone Entry Master. Similar to **TE904** (above) but with 700 name capacity LCD Electronic Directory display. Can also be used with optional "No Phone Bill" equipment (model **TE7210NP/LCD**).



M300 IP 3.5" COLOR
 Video-Intercom Monitor Station (PoE powered)



M700 IP 7" COLOR
 Touch-Screen Video-Intercom Monitor Station (PoE powered)



HOME AND OFFICE INTERCOMS

Protect your home or office with our wide selection of intercoms and video-intercoms. Alpha Communications® can provide systems ranging from 2 to 7,000+ stations. Choose from conventional type systems, all the way up to programmable microprocessor systems for large commercial applications. Add the sounds of music to make your home or office a nicer place to work or to relax. Secure your property and guard your loved ones with one of our video-intercom systems (in Black and White or **COLOR**)!



SC-100
SC-100L
Thru the glass type
Ticket Window / Teller Intercom



SM222
Master Station



SC-300
Counter Mount type
Ticket Window /
Teller Intercom



OR222
Surf. Remote
(Both from
SM222K kit)

S1 Special
Scrulox Screwdriver



ES01S
1 Button Surface
Door Station
with Rainhood



OR502SS Vandal-
Resistant Remote
St. Steel



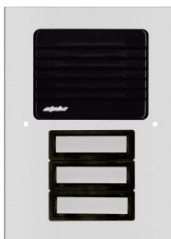
ES512/00
Outdoor Remote
(speaker only)



ES512/01
Outdoor Remote



ES512/02
Outdoor Remote



ES512/03
Outdoor Remote



SS105B
T1640
16VAC
Plug-In
Transformer

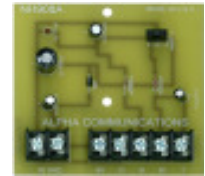
HT2006/10
(10-Button)
-OR-
HT2006/5
(5-Button)
Common-Talk
Selective-Ring
Handsets



SS102A
16VAC
(10VA)
Transformer



SS12P
12VDC
Plug-In
Power
Supply

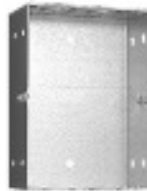


NH908A
HT2006 System
Power Supply
(no door stations)



SS106
(120VAC)
or **SS104**
(220VAC
primary)
Tri-Volt
Transformer

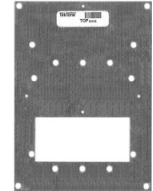
NH208TVU
HT2006 System
Power Supply
(with 1 or
more door
stations)



IH101 Flush
Back Box



IH400A
Desk Cabinet



IH103 Steel
Mounting Plate



IH700W
Surface Box
(White)



IH700G
Surface Box
(Grey)



OH700
Surface Box
(Black)
(special order)

Need more information on other home and office intercoms? **Call us Toll-Free 1-800-666-4800.**



LI380 4 Bulb
AlphaStatus™
Corridor Light



LI380LED 4 LED
AlphaStatus™
Corridor Light



AA711
Digital-Dial Desk
(or optional Wall)
Master Station
Light Grey Color
(shown less cord)
40 station capacity



AA702
Digital-Dial
Surface Wall
Master Station
40 station capacity



RSS402 2 Button
AlphaStatus™
Room Station



RSS404 4 Button
AlphaStatus™
Room Station



RSS403 3 Button
AlphaStatus™
Room Station



RSS405 5 Button
AlphaStatus™
Room Station



CC201
Clean Room Intercom Master
(Maximum 2 per system)



RSM404
Series AlphaStatus™
(4 room capacity)
Room Status Master Module
(shown with MT2T 2-module
Titanium frame and TSMT
Tone Speaker Module)



13510
Modular
Panel
Key / Tool
(for all 'MT' series frames
and certain stations)

PSR-24/6
24VDC (6.5 Amp)
AlphaStatus™
(and other) systems
power supply
(other sizes available)



**CL / CP / CS series
alphaBlueLight™**
36" Call Stations -
ideal for Parking
Garages, Pole
Mounting, and
other remote locations



VK237WS 2-wire Video-Intercom Kit with
VM237W 7" **COLOR** Video-Intercom Monitor,
VR237S Silver Finish Surface Door Camera
Station and **SS237** plug-in Power Supply with
optional door release
(expandable)



alphaBlueLight™
Choose from
a variety of 9'
BlueLight Towers,
Call stations and
Emergency Phones

EMERGENCY / NURSE-CALL

Choose from visual (no intercom) (AEC100, DS100, NC110A, NC110N or NC500) or audio-visual (with intercom) (NC150N, NC200N or NC300II) systems. From basic pull-cords, up to our microprocessor nurse-call, wired or wireless, whether you need a system for a senior citizen residence, assisted living center, nursing home, H.R.F., hospice, clinic, or hospital, we have a system to meet your needs. With decades of experience in health care systems, look to Alpha Communications® to keep your facilities "in the pink".



**AlphaEcall™
AEC100**
Emergency-Call
Annunciator Unit
(shown with 1- **ELM116**
16-LED module and 1-
TSMET Tone Module)
Titanium Finish



Emergency
Pull Cords

**SF117/2A
SF119/2A**
(No LED - With
Red Mechanical
Indicator)



**SF118/2A
SF118/4A**
(With LED)



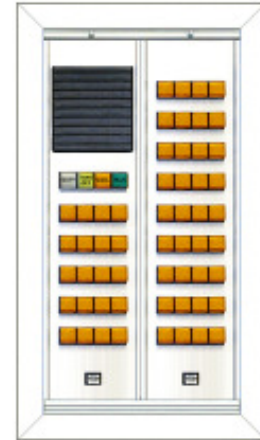
SF154A
Emergency
Push Station



RS101S
Audible-Visual
Remote Indicator



IR150B Remote
Audio Staff Station



NC150N Audio-Visual
Wall Mount Nurse-Call
Master Station (UL 1069)
(shown less **TA150N** handset)



AC219
Emergency
Call
Control
Unit

PK152
Nurse
Call
Control
Unit



LI381 (1 Bulb)
LI382 (2 Bulb)
Corridor Dome
Lights -OR-
LI118B (DC)
LI123B (AC)
Corridor Dome
Lights with built-in Buzzers



IR151B Single
Bed Audio Station



IR152B Double
Bed Audio Station



IR155B
Single Pull-Cord Type
Audio Station (not UL)



NC110N Audible-Visual
Wall Mount Nurse-Call
Master Station (UL1069)
(shown with 32 lamps)



N553A
Annunciator
Lamp
Bulb
Extraction
Tool



LI150B
Duty Station



SF101C
Staff Station



NC110A Audible-Visual
Desk Mount Nurse-Call
Master Station (UL1069)
(with 50 LED indicators)



SF155B (toilet)
SF337C (shower)
Emergency
Push /Pull
Cord Station



SF339
Emergency
'Mushroom Head'
Push Station



NC200N
Audio-Visual
Desk Mount Nurse-Call
Master Station (UL1069)
(shown with **TA200N** handset,
60 lamps and **IH204NT** cabinet)

Microprocessor (addressable)



NC305LCD Standard Desk Master for NC300II systems (with 10.4" LCD Display)



NC3351A / NC351A/2 Central Processing Equipment for NC300II systems



**LI380
LI384A
LI386C**
4-Bulb Corridor Dome / Zone Lights



**LI380LED
LI386LED**
4-LED Corridor Dome / Zone Lights

LI382LED
2-LED Corridor Dome Lights



IH151N U.L. Listed Junction Box Enclosure for **PK152 & PK153** (and other) Central Equipment



IR300E
Multi-Purpose Station



IR319B
1-Bed Audio Patient Station with 1 multi-input jack



IR320B
2-Bed Audio Patient Station with 2 multi-input jacks



IR310E
Audio Staff Station



IR315F
Audio Duty / Staff Station



IR318B
Single Pull-Cord Type Audio Station



SF301/8 (8 foot) Oxygen-Safe Call Cord



SF301G
Geriatric Call Cord with squeeze bulb



SF401P Standard Pillow Speaker



SF31ZKL 'Digital' Pillow Speaker



SF401A Standard 7' (8-pin DIN) Call Cord



SF401EX 6" Strain Relief Cable Extender for SF401A/P series cords



NC399P
Pocket Pager



PGR-AL924
Pocket Pager



SF350B
Nurse/Aide Presence Station (2-level)



SF340B / SF381
Standard Push/Pull Station



SF337C
Shower Push/Pull Station



**SF156B
SF341B**
CODE CALL Push Station (optional PULL)

