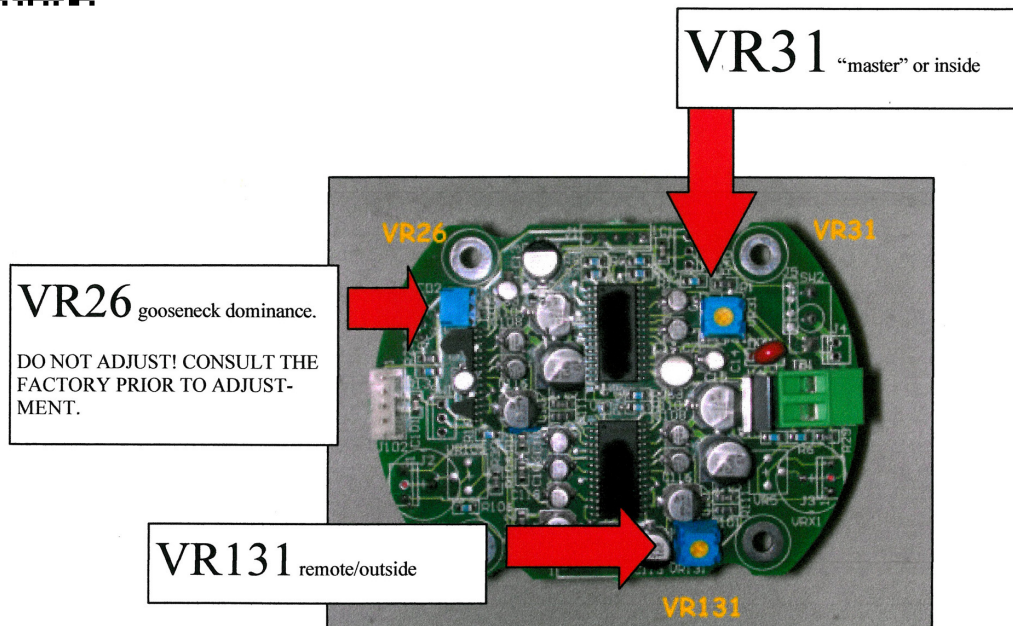




NOTE: set volume control knobs to "3:00" position before beginning.

Field Calibration



Symptom: conversation is "clipped"; conversations are cut short.

Solution: **FIRST: NOTE ORIGINAL POSITION OF THE POTENTIOMETERS.**
if inside operator's (IO) conversation is clipped, increase IO's microphone sensitivity by turning R31 one (1) notch clockwise.

if outside operator's (OO) conversation is clipped, increase OO's microphone sensitivity by turning R131 one (1) notch clockwise.

Repeat if necessary.

NOTE: R31 and R131 are "balanced". Therefore, decreasing one microphone will have the same effect as increasing the other (it's all relative).

The control assembly must be placed back into the housing to perform correctly. Otherwise, feedback may occur.

"Inside Operator": gooseneck side (SC-100; SC-300); or circuit board side.

VR26 if adjusted clockwise, will allow the gooseneck/master side mic to dominate the outside microphone. If increased too much, the outside/remote will not be heard at all. Default position is at the 10:00 position

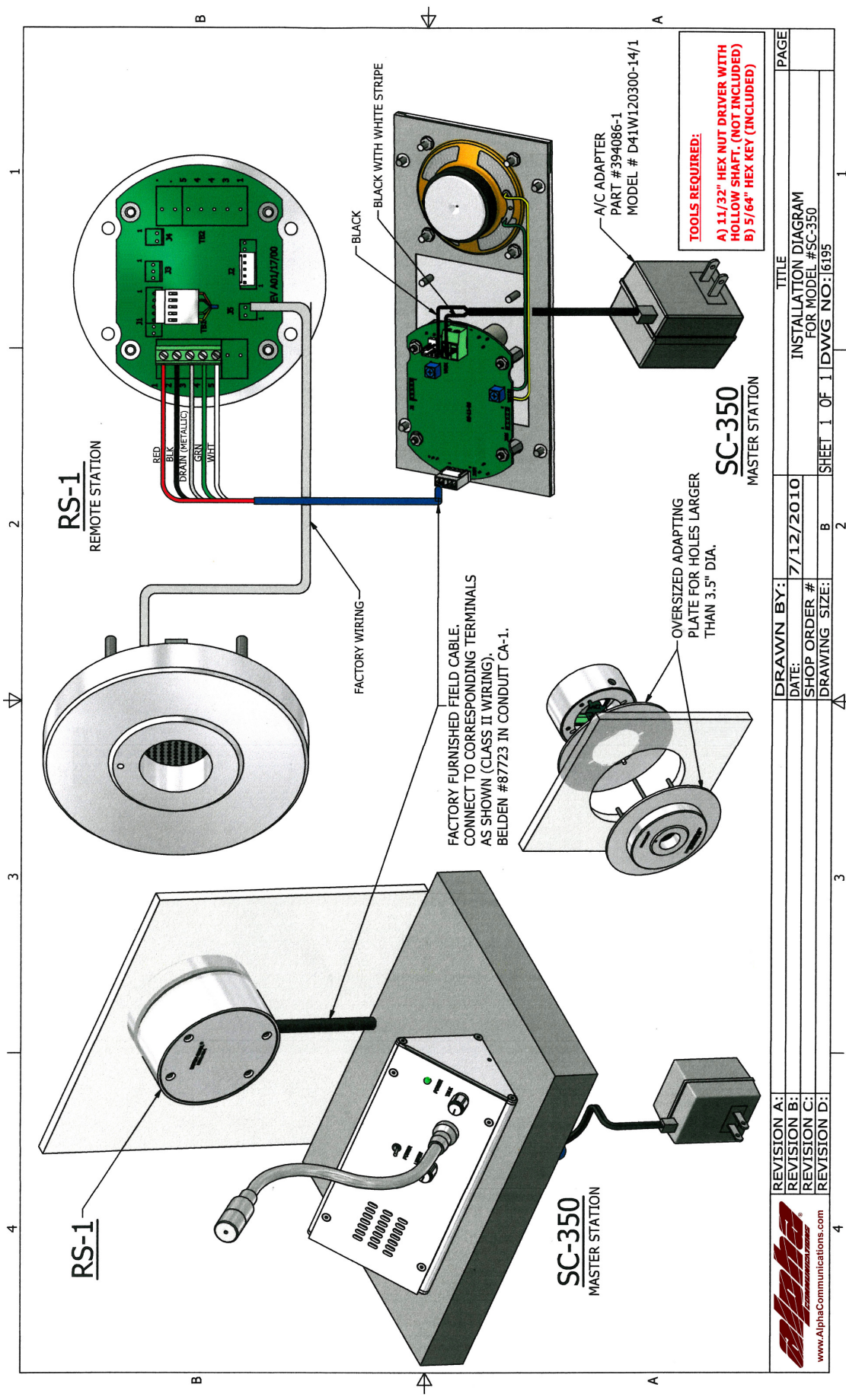
INSTALLATION GUIDELINES and GENERAL INFORMATION:

1. Wiring connections and terminals may not be in the same order as they appear on the equipment.
2. Observe all local and national electrical and building codes.



42 Central Drive, Farmingdale NY 11735-1202
(631) 777-5500 Fax: (631) 777-5599
TOLL-FREE Technical Line 1-800-666-4800
Email: info@alphacommunications.com

**TYPICAL WIRING DIAGRAM AND
CALIBRATION INSTRUCTIONS
FOR THE SC-350 TICKET WINDOW
INTERCOM SYSTEM / SERIES**



REVISION A:	DRAWN BY:	DATE:	TITLE	PAGE
REVISION B:	DATE:	7/12/2010	INSTALLATION DIAGRAM	
REVISION C:	SHOP ORDER #		FOR MODEL #SC-350	
REVISION D:	DRAWING SIZE:	B	SHEET 1 OF 1 DWG NO: 6195	1