




## ATAC102 QUICK START GUIDE



PLEASE SEND US PHOTOS OF YOUR INSTALLATION.  
IT COULD BE FEATURED ON OUR SOCIAL MEDIA!  
SEND PHOTOS TO: [INFO@ALPHATOUGH.INFO](mailto:INFO@ALPHATOUGH.INFO)

**NOTE: SINCE ALPHATOUGH™ IS AN EVER-IMPROVING PLATFORM, PRINTED DOCUMENTATION, SUCH AS THIS MANUAL, MAY NOT BE 100% UP-TO-DATE. FOR THE MOST UP-TO-DATE DOCUMENTATION, PLEASE VISIT:**

<https://www.alphatough.info/help>


















42 Central Drive Farmingdale, NY 11735-1202  
Phone: 631-777-5500 | Fax: 631-777-5599  
<http://www.alphacommunications.com>

Copyright© 2023. Alpha Communications® All Rights Reserved

AWD301 – Rev April 2023

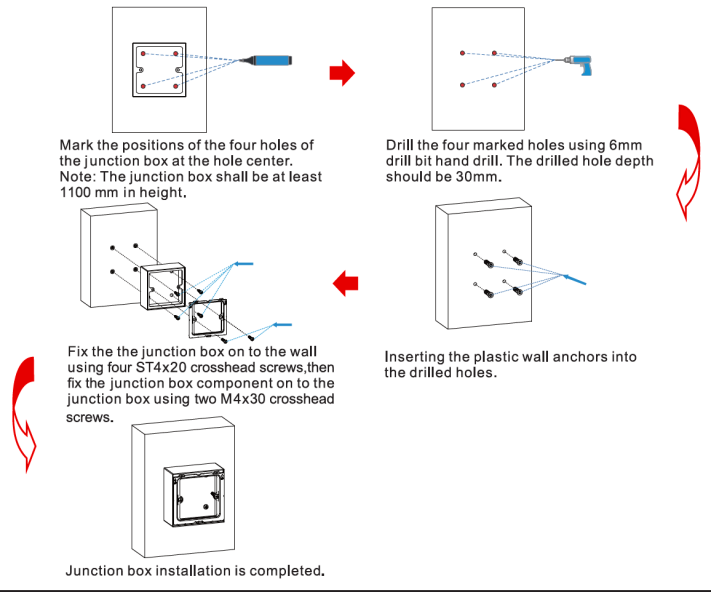
## Included Hardware

Before you begin using the device, please check the version you have and make sure that the following items are included in the shipped box:

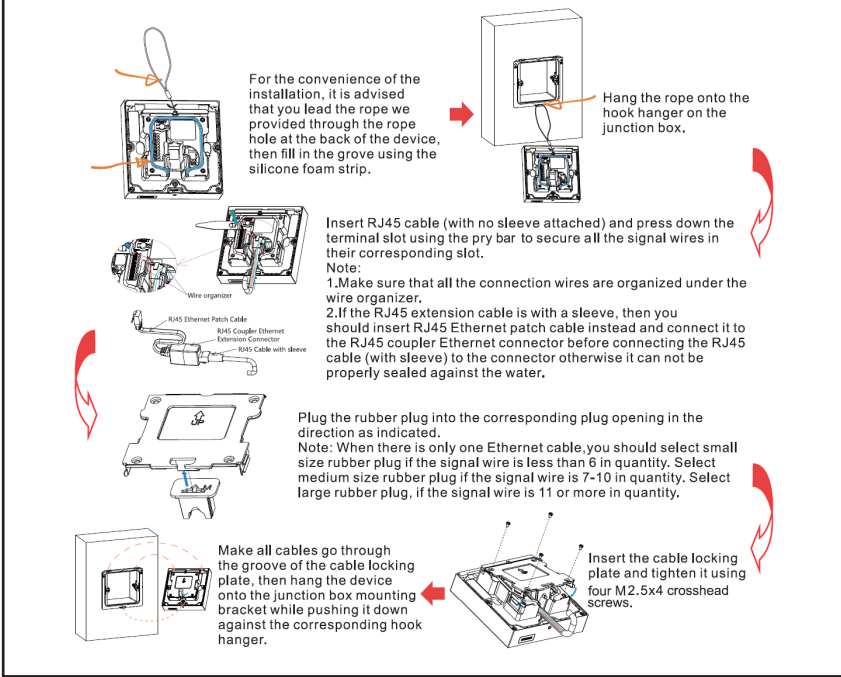
-  M2.5x4 crosshead screw x 4
  Rope x 1
  Pry bar x 1
-  ST4x20 crosshead screw x 4
  Plastic wall anchor x 4
-  M4x30 crosshead screw x 2
  Silicone foam seal strip x 1
-  M3x4 headless screw x 1
  RJ45 Ethernet patch cable x 1
-  Allen wrench x 1
  Rubber plug (S, M, L) x 3
-  RJ45 coupler Ethernet extension connector x 1
-  Embedded junction box mounting bracket x 1
-  Cable locking plate x 1
  ATAC102 x 1

# Installation

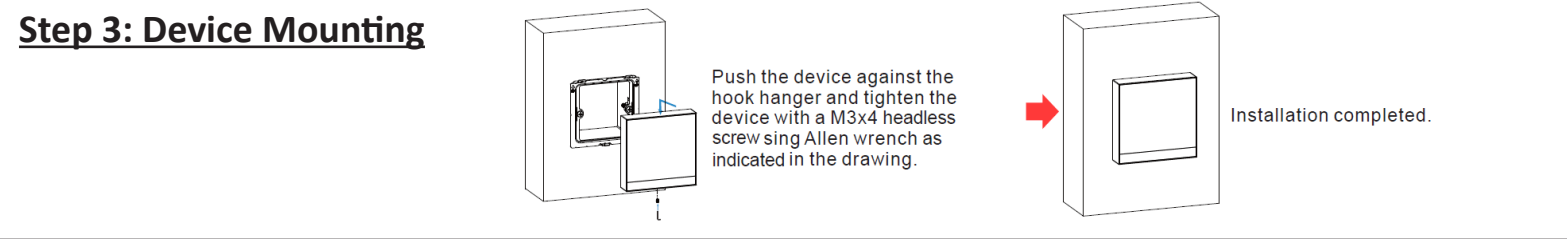
## Step 1: Wall Mounting Bracket



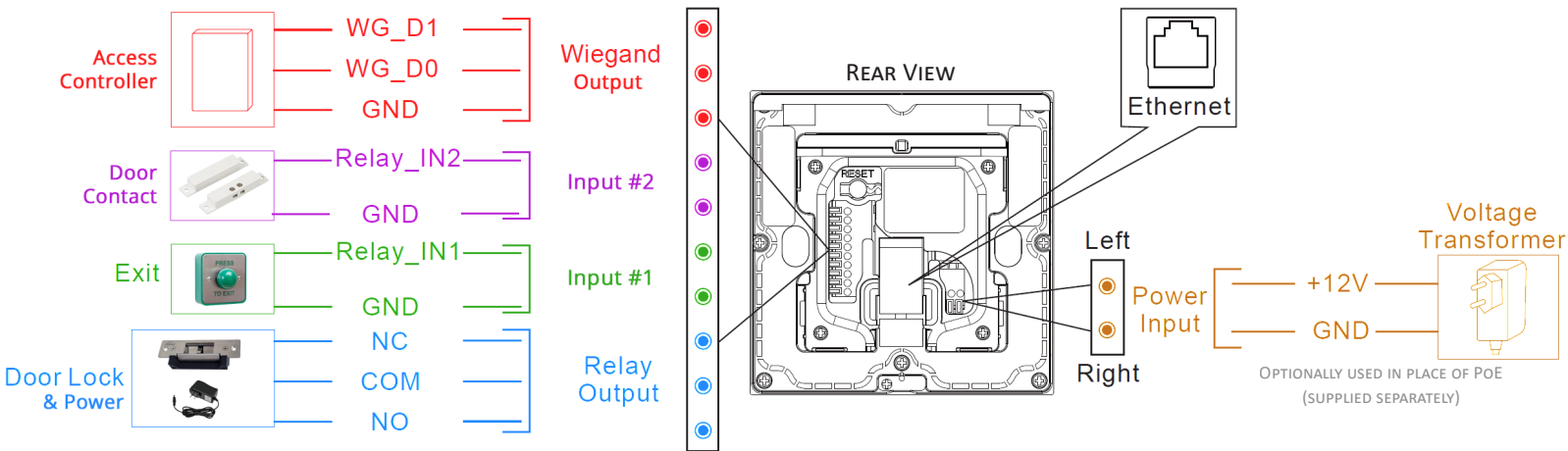
## Step 2: Back Cover Installation



## Step 3: Device Mounting



# Device Wiring



# 12VDC 1A Wire Lengths

If you are using 12VDC power instead of PoE, please follow these wire gauge and length limitations

	20 AWG	22 AWG	24 AWG	26 AWG
12VDC 1A	≤ 160'	≤ 130'	≤ 98'	≤ 49'
Power Adapter	≤ 50m	≤ 40m	≤ 30m	≤ 15m