



NC470DEM Netbook Demo

for Tek-CARE®400 & Tek-CARE®500

Installation Instructions

IL920
Section C
Rev. 1 - 04/2011



Figure 1

Introduction

TekTone®'s NC470DEM Netbook Demo enables you to demonstrate the Tek-CARE®500 wireless emergency call system and the Tek-BRIDGE™ PC for the Tek-CARE®400 nurse call system using the included small netbook computer. Just select which system to demonstrate on the netbook's startup screen.

Tek-BRIDGE™ PC Demo

When running in Tek-BRIDGE™ PC mode, you can use the NC470DEM to demonstrate:

- Tek-CARE® Event Monitor
- Tek-CARE® Reporting System
- Radio Pocket Paging (requires an NC365A or NC369 Pager Transmitter)
- Wireless Telephone Interface (requires an NC464 CCM)

Tek-CARE®500 Demo

When running in Tek-CARE®500 mode, you can use the NC470DEM to demonstrate:

- Tek-CARE® Event Monitor
- Tek-CARE® Reporting System
- Radio Pocket Paging (requires an NC365A or NC369 Pager Transmitter, and NC399P Pagers)
- Receiving calls from both EchoStream devices (requires an NC510ES Receiver) and Frequency Agile (FA) devices (requires an NC510 Receiver).

Equipment Included

The NC470DEM demo includes a netbook computer (see *Figure 1*) with AC power cord/charger and these features:

- VGA port (connect an optional flat-panel monitor)
- 2 USB 2.0 ports
- RJ45 LAN port
- Wireless Internet card
- 10.3"W × 7"D × 1.4"H
- Keyboard and multi-touch touchpad
- 10.1" LED Non-Glare Screen (1024×600)
- Built-in speaker
- Up to 4 hours battery life
- Genuine Windows® XP Home

The demo also includes a CT429 4-Port USB-to-Serial Hub, which converts one USB port to four RS232 serial ports. The CT429 Hub can be plugged into either of the netbook's USB ports with the included USB cable. It is powered by the USB port, and does not require a power cord. TekTone® has preconfigured each of its COM ports to connect to a specific device (see *Figure 2*).

When you use this as a Tek-BRIDGE™ PC demo, you must supply an ethernet cable long enough to connect the netbook to the PM451 Hub Control Module in your Tek-CARE®400 demo CE.



Figure 2

ALPHA COMMUNICATIONS® • 42 Central Drive • Farmingdale, NY 11735-1202

Toll-Free Technical Line: 1-800-666-4800 • Phone: (631) 777-5500 • Fax: (631) 777-5599

Website: www.AlphaCommunications.com • Email: info@alphacommunications.com

Connections

Tek-BRIDGE™ PC Demo

1. Connect one end of the supplied USB cable to the CT429 Hub. Connect the other end to the netbook.
2. Connect one end of an ethernet cable (not included) to the netbook's ethernet port. Connect the other end to the PM451 Hub Control Module in your Tek-CARE®400 demo CE.
3. Optional: Connect a TekTone® NC365A or NC369 Pager Transmitter to COM3 (Port 2) of the CT429 Hub.
4. Optional: Connect a TekTone® NC464 Central Control Module (CCM) to COM5 (Port4) of the CT429 Hub.

Tek-CARE®500 Demo

1. Connect one end of the supplied USB cable to the CT429 Hub. Connect the other end to the netbook.
2. Connect your NC510ES EchoStream Receiver to COM1 (Port1) of the CT429 Hub.
3. Optional: Connect a TekTone® NC365A or NC369 Pager Transmitter to COM3 (Port 2) of the CT429 Hub.
4. Optional: Connect an NC510FA Receiver to COM4 (Port3) of the CT429 Hub.

Starting Up the Netbook

1. Connect one end of the netbook's AC power cord to the netbook and the other end to a 120 VAC outlet.
2. Turn on the netbook.
4. From the startup screen (see *Figure 3*):
 - Type **1** to select *NC470 Demo* and demonstrate the Tek-BRIDGE™ PC, or
 - Type **2** to select *NC501ES Demo* and demonstrate the Tek-CARE®500.

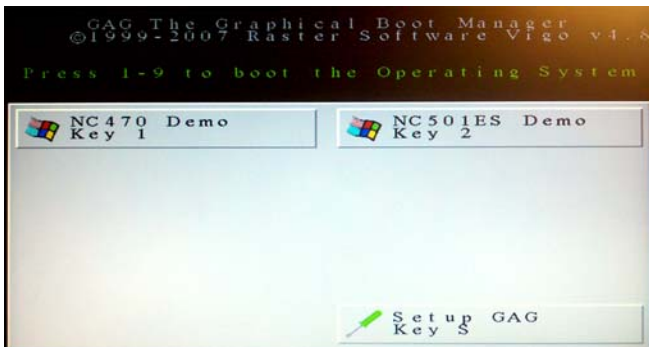


Figure 3

Update the Software

Keep your netbook running the most recent versions of Tek-CARE®400 and Tek-CARE®500 software. When TekTone® releases new software, download and install it using the NC470DEM netbook.

Update the Tek-BRIDGE™ PC Software

1. Turn on the netbook. At the startup screen, Type **1** to select *NC470 Demo*.
2. Use the netbook's wireless internet card to connect to the internet. Go to www.tekton.com/tep and log in using your TEP password.
3. Download the latest *LS450_setup_xxxx.exe* and *NC470_setup_xxxx.exe* files to the netbook's desktop.
4. Shut down any software that's running. Run the new *LS450_setup_xxxx.exe* from the netbook's desktop, and follow the program's instructions.
5. Shut down any software that's running. Run the new *NC470_setup_xxxx.exe* from the netbook's desktop, and follow the program's instructions.

Update the Tek-CARE®500 Software

1. Turn on the netbook. At the startup screen, Type **2** to select *NC501ES Demo*.
2. Use the netbook's wireless internet card to connect to the internet. Go to www.tekton.com/tep and log in using your TEP password.
3. Download the latest *NC501_setup_xxxx.exe* file to the netbook's desktop.
3. Shut down any software that's running. Run the new *NC501_setup_xxxx.exe* from the netbook's desktop, and follow the program's instructions.